

## Ablerex ITS

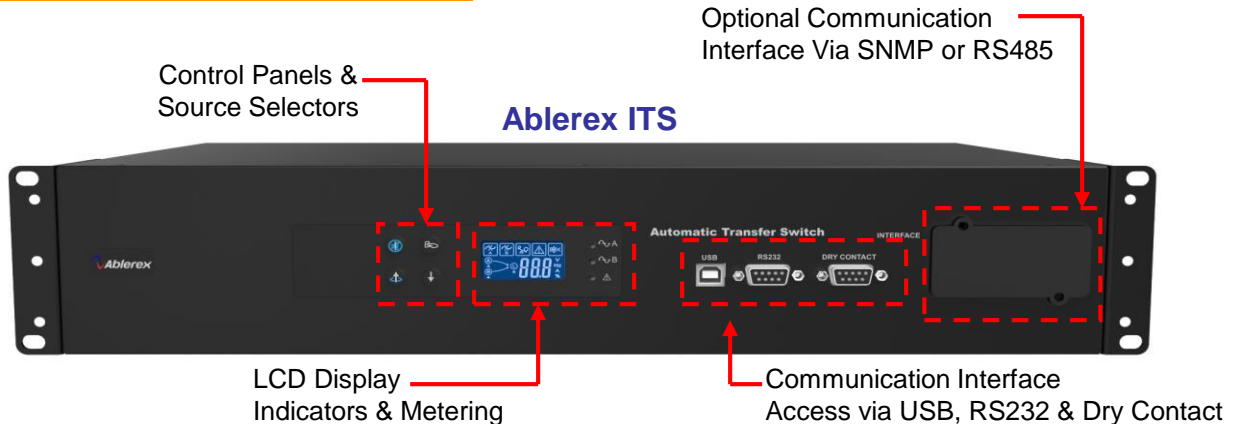


### Ablerex Intelligent Transfer Switch (ITS) 32A, 19" Rack mounted For Single Corded Equipment

The Ablerex Rack Intelligent Transfer Switch (ITS) provides reliable redundant power to connected equipment and has two input power cords, one for each AC source. The ITS allows instantaneous transfer switching of load to the secondary source when the primary source becomes unavailable. The transfer is carried out without source overlapping.

Built-in network and local interfaces allows custom configuration settings for added flexibility. The ITS includes a variety of input and output connections to distribute 100V/110V/115V/120V/127V power to multiple outlets.

#### Ablerex ITS Front Panel

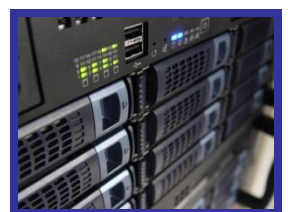


#### KEY BENEFITS

- LCD Display Control & Metering
- Automatic switching to alternate source.
- Seamless power transfer.
- Continuous source monitoring.
- Robust out-of-phase switching capability.
- Preferred source selection on front panel.
- Effective solution for maintenance bypass needs.
- Compact 19" rack 1U system.

#### APPLICATIONS

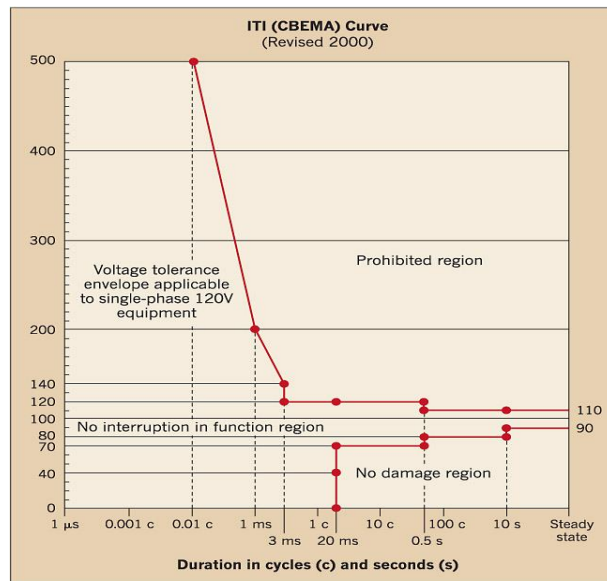
- Data Centre
- Telecom Applications
- Aviation Control Systems
- Healthcare Facilities
- Manufacturing and Process Control
- Institutional and Transportation Facilities



## SEAMLESS POWER TRANSFER

The Ablerex ITS switch power seamlessly to IT equipment. Per the ITI curve, typical power supplies will operate 20ms after AC voltage drops to zero. The IEEE 1100-1999 standard also references the ITI curve. The Server System Infrastructure standard recommends a hold-up time for power supplies to be a minimum of 21ms for a voltage range of 100-240V.

The Ablerex ITS switching time includes the time for the built-in intelligence to determine whether the voltage and frequency are in range. Any failure point in the electronics does not cause a drop out of the output voltage because the unit incorporates redundancy of its electronics circuitry to avoid fault tolerance.

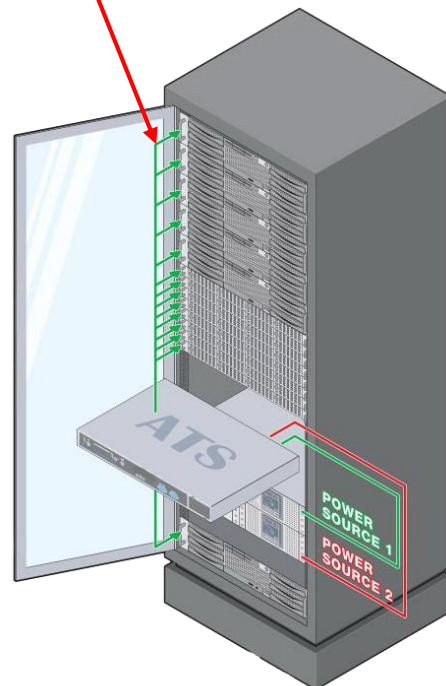


## TECHNICAL SPECIFICATION

Model	ITS-232	ITS-232F
Nominal Input Voltage	200V/208V/220V/230V/240V	
Acceptable Input Voltage	150Vac~300Vac	
Input Voltage Tolerance	±10% (Default) ; Software selectable: ± 5% , 15% , 20%	
Rated Frequency	50/60Hz (auto sensing)	
Maximum input/output current	32A	
No of Switching Poles	2 Poles (Ph+ N)	
Efficiency	99% (with full linear load)	
Overload Capacity	110% Continuous operation with Alarm 111% - 125% Alarm, shutdown after ~60sec 126% - 150% Alarm, shutdown after ~30sec 151% - 200% Alarm, shutdown after ~5sec	
Transfer Time	8-12ms (sensitivity adjustable)	
LED Display	Input source A, Input source B, Error Indicator	
LCD Display	Status: Source Error, Overload, Alarm, Silence Parameters: Voltage, Current, Frequency, Load %, Error code	
Input Connection	2 x 40A Terminal 3P	
Output Connection	8 x IEC-C13 + 2 x IEC-C19	2 x Nema L6-30R
Communication Interface	Standard: 1x RS232, 1x USB, 1x Dry Contact Optional: 1x External Slot (RS485/SNMP)	
Dimension (W x H x D)	440 x 88 x 325mm	
Weight	~8Kg	
Safety Compliance	IEC 60950-1	
EMC Compliance	EN 55022 + EN 55024	

## RACK APPLICATION

Output to Critical loads



Designed &  
Engineered by:

