

USER'S MANUAL

800LS / 1000LS



This manual contains important safety instructions. Please follow all instructions during installation. Read this manual thoroughly before unpacking, installing or operating.

Caution: Risk of Electric Shock

- The UPS contains batteries. The output outlets may be electrically live even when the UPS is disconnected from the AC mains.
- The UPS contains potentially hazardous voltages. Do not open the units as there are no user serviceable parts. All maintenance and servicing should be performed by qualified service personnel.
- Risk of electric shock, Battery Circuit is not isolated from AC input, hazardous voltage may exist between battery terminals and ground. Test before servicing and use insulated tools.

NOTE:The UPS is designed to be for use with computer loads only.

Caution : Do not connect a laser printer to the UPS.

A laser printer draws significantly more power than other types of equipment and may overload the UPS.

SETUP

1 Inspection

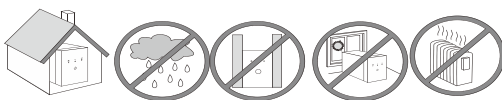
Inspect the UPS upon receipt. Notify the carrier and dealer if there is damage. The package is recyclable; save it for reuse or dispose of it properly.

Inspect accessories:

- ① Power cable 1PCS
- USER MANUAL 1PCS

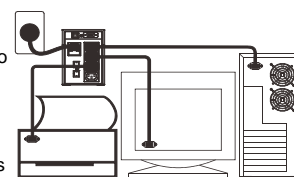
2 Choose an installation location

- Avoid locations that are excessively humid, near water, near heat sources or in direct sunlight
- Allow 1 inch (2.5cm) clearance on each side of the UPS.



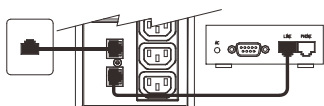
3 Connecting Equipment and Power to the UPS

- Step1: Connect the UPS to the AC mains.
 Step2: Connect the equipment to the UPS output outlets.
 Step3: Switch on the AC Mains, follow by the UPS then the equipment last.
 *Plug the UPS into the AC Mains to charge for 8 hours before using the UPS.



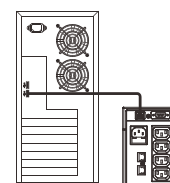
4 Connect Modem/ Phone / Network for Surge Protection (Optional)

- For modem/phone line protection, connect equipment to the RJ11 port using RJ11 cable.
- For surge protection, connect equipment to the RJ45 port using Ethernet/RJ45 cable.



5 Connect Interface Device

The UPS is equipped with two interface ports: a USB port (Standard) and a 9-pin RS232 port (Optional) allowing advanced communication network between the UPS and a computer (network).



6 Turn ON/OFF the UPS

Turn on the UPS: Press the UPS On/OFF Switch for approx. 3 seconds, then the Buzzer sounds twice, the UPS will start-up.
 Turn off the UPS: Press the UPS On/OFF Switch for approx. 3 seconds, then the Buzzer sounds twice, the UPS will shutdown.

7 Cold Start Function

When the UPS is OFF and no utility input power is present, use the "Cold Start" feature to apply power to the loads from UPS's battery. Press the "ON/OFF" switch until the UPS beeps.

8 Software Download and Installation

Please follow steps below to download and install monitoring software:

1. Go to the website <http://www.ablerex.com.sg/downloads.html>
2. Depending on the computer OS, select Emily software (for Win 7&8 OS, select Emily2) and click download.
3. Follow the on-screen instructions to install the software.
4. When the computer restarts, the monitoring software automatically search and connects to the UPS.

FRONT PANEL EXPLANATIONS

REAR PANEL EXPLANATIONS

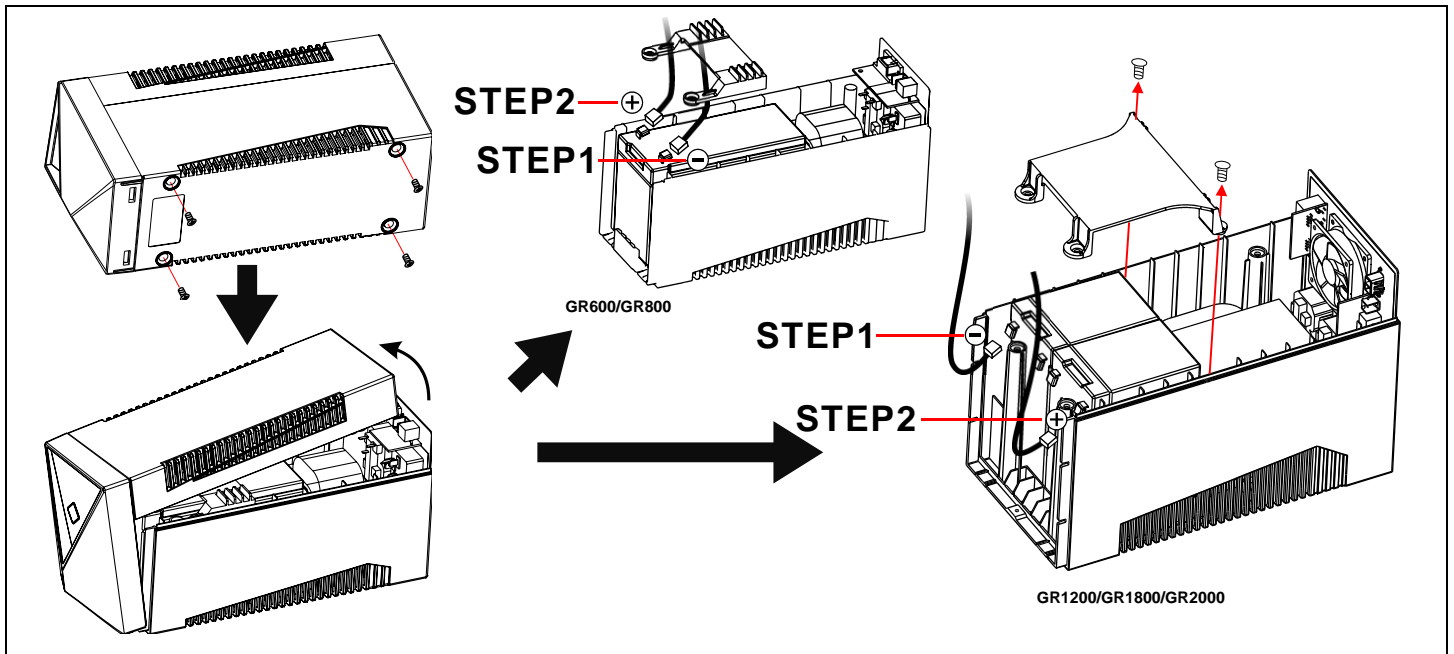
800LS/1000LS-LED FRONT PANEL (STANDARD)	Symbol	LED Color	Description/function	800LS/1000LS REAR PANEL	Symbol	Description
		N/A	Turn-on/Turn-off Switch		1	AC Input Outlet
		Green	Lit: Line mode Dim: Abnormal input voltage and frequency		2	Fuse
		Yellow	Lit: Battery mode Flashing: Battery Low		3	Output Connector: 4x Thailand Outlets
		Red	Lit: System malfunction or abnormal		4	USB (Standard)

REPLACING THE BATTERY

Note : Once the battery is disconnected, the loads are not protected from power outages.

1. Use an insulated philip screwdriver to remove the four screws located at the base of the UPS.
2. Remove the front panel and top cover.
3. Disconnect the battery cable terminals before removing the battery from the UPS.
 Step1: Loosen the black cable from the negative (-) terminal.
 Step2: Loosen the red cable from the positive (+) terminal.

4. Connect the battery cables to the terminals of the new battery.
 Step1: Insert the black cable to the negative (-) terminal.
 Step2: Insert the red cable to the positive (+) terminal.
 Note: Small sparks at the battery connectors are normal during connection.
5. Slide the battery into the UPS.
6. Close the front panel and fasten the four screws located at the base of the UPS.
7. Dispose off the old battery properly at an appropriate recycling facility.



TROUBLESHOOTING

	Situation	Problem / Possible Causes	Solution
Refer to the steps below should the UPS fail to function correctly Step 1: Is the AC Mains switch in the "ON" position? Step 2: Is the UPS plugged into the AC power supply? Step 3: Is the power supply within specified unit values? Step 4: Has the fuse gone in the mains plug? Step 5: Is the UPS overload? Step 6: Is the battery flat or defective?	No LEDs display on the front panel.	Battery voltage is low.	Charge the UPS at least 6 hours.
		Battery is defective.	Replace the battery with the same capacity.
		The UPS is not turned on.	Press the power switch again to turn on the UPS.
	Alarm beeps continuously when the Utility is normal.	The UPS is overloaded.	Remove some loads/equipment first. The connected equipment exceeds the UPS specified 'capacity/load'.
	UPS does not provide expected backup time.	The UPS is overloaded.	Remove some loads/equipment first. The connected equipment exceeds the UPS specified 'capacity/load'.
		Battery voltage is too low.	Charge the UPS at least 6 hours.
		Battery is defective.	Replace the battery with the same capacity.
	The Utility is normal but LED is flashing.	Power cord is loose.	Reconnect the power cord properly.

Description	Ablerex 800LS/1000LS SPECIFICATIONS	
Model	800LS	1000LS
Capacity	800VA/400W	1000VA/600W
Input		
Voltage	220/230/240VAC	
Voltage Range	160~290Vac	
Output		
Voltage Regulation	+/- 10%	
Transfer Time	Typical 2-6ms, 10ms max.	
Waveform	Simulated Sine Wave	
Battery		
Type & Number	12V/7Ah x 1	12V/9Ah x 1
Charging time	4-6 hours recover to 90% capacity	
Physical		
Dimension (WxHxD, mm)	100 x 140 x 292	
Net Weight (kg)	5	5.5
Packaging Dimension (WxHxD, mm)	137 x 226 x 321	
Gross Weight (kg)	5.5	6
Environment		
Humidity	0-90 % RH @ 0-40 C (non-condensing)	
Noise level	Less than 40 dB	
Standards and Certifications		
Safety Standard	EN62040-2	
EMC/Surge Standard	EN61000-3-2, EN61000-3-3	
Mark	CE, RoHS, TISI	