

# **UPS Monitoring Software User Manual**

**iEmily**

## **Table of Contents**

1. Installation.....	2
1.1 Note.....	2
1.2 Installation Instructions.....	2
1.3 Uninstall iEmily.....	8
2. Function Descriptions.....	9
2.1 Real-time Monitoring Display.....	9
2.2 Status and Settings.....	10
2.3 Data Log.....	14
2.4 Other Functions.....	15
3. Troubleshooting Guide.....	16
3.1 iEmily program failure during installation/operation.....	16

# 1. Installation & Settings

## 1.1 Note

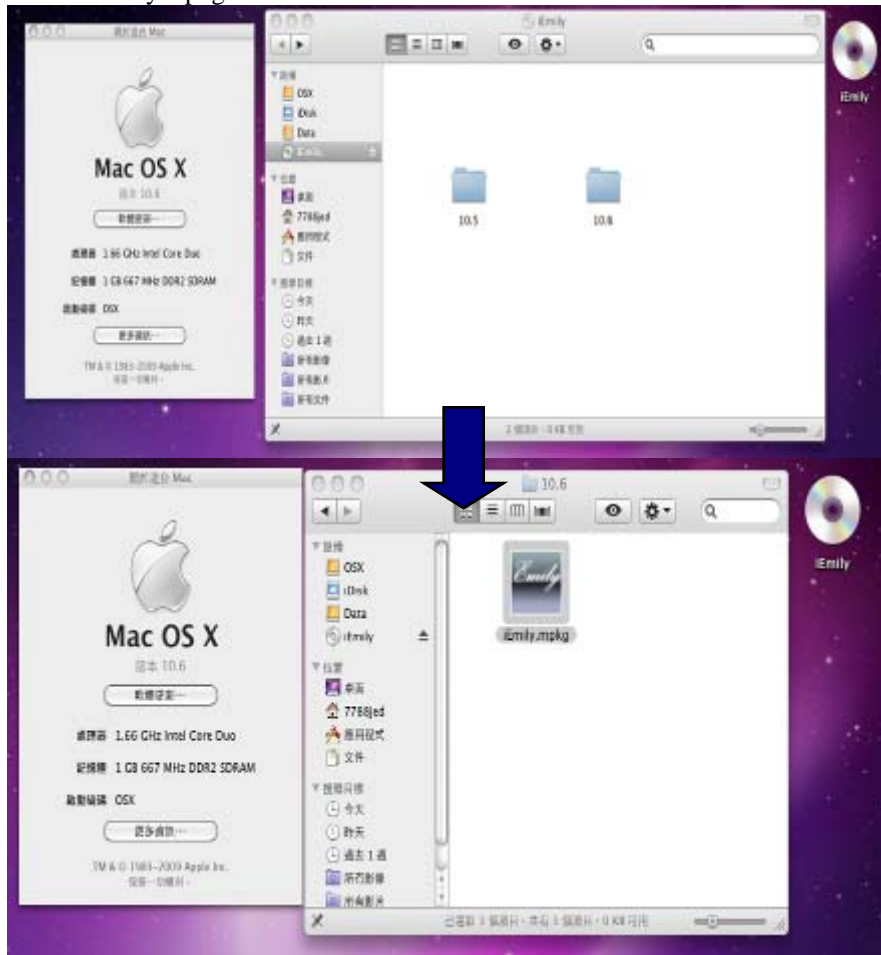
- Operating System (OS): Mac OS X v10.5 Leopard, Mac OS X v10.6 Snow Leopard
- Communication Port: USB Connector

## 1.2 Installation Instructions

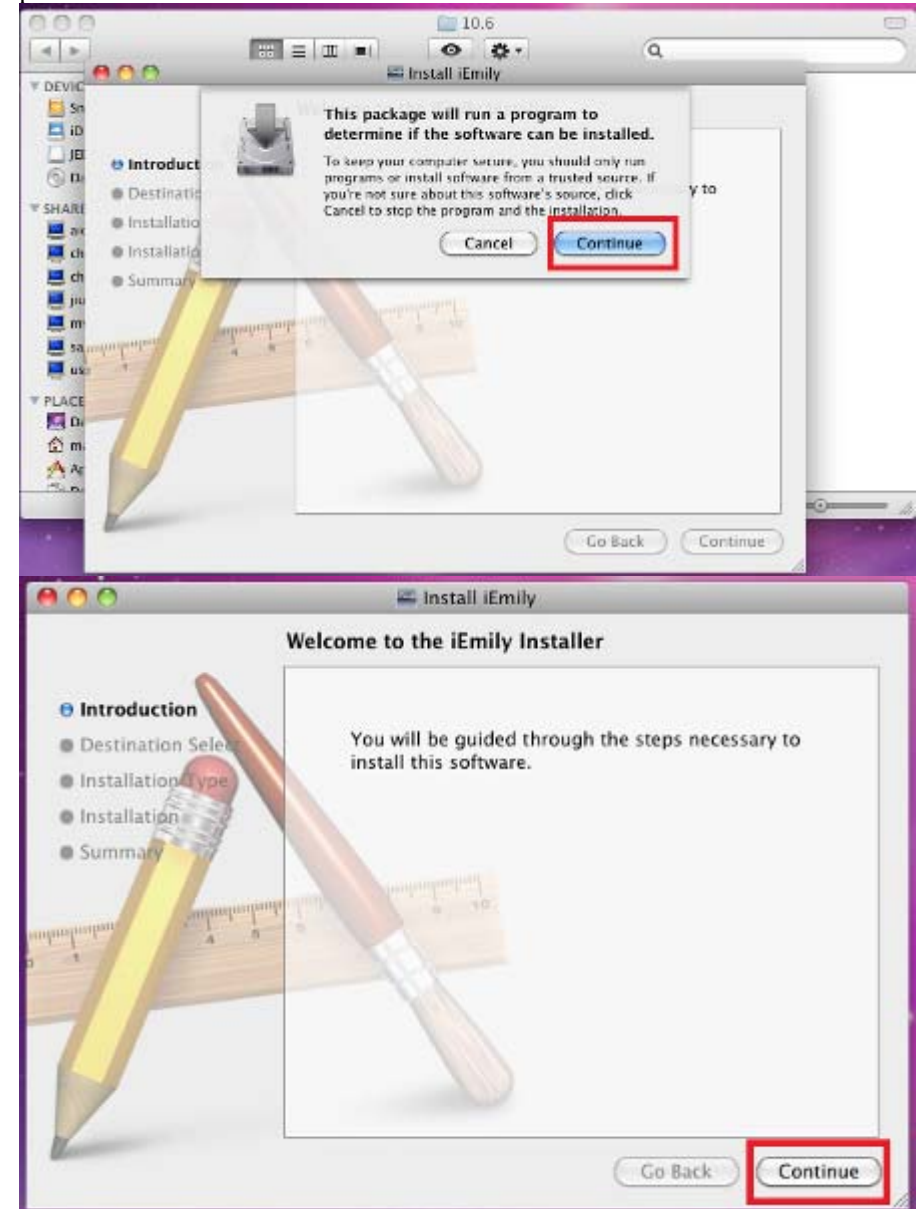
1.2.1 Switch on the UPS. Connect the UPS comm. Port to the Computer USB port.

1.2.2 Insert the iEmily software CD into the computer CD drive. If the computer is running on Mac OS X v10.5 Leopard, click 10.5 folder to select “iEmily.mpkg”.

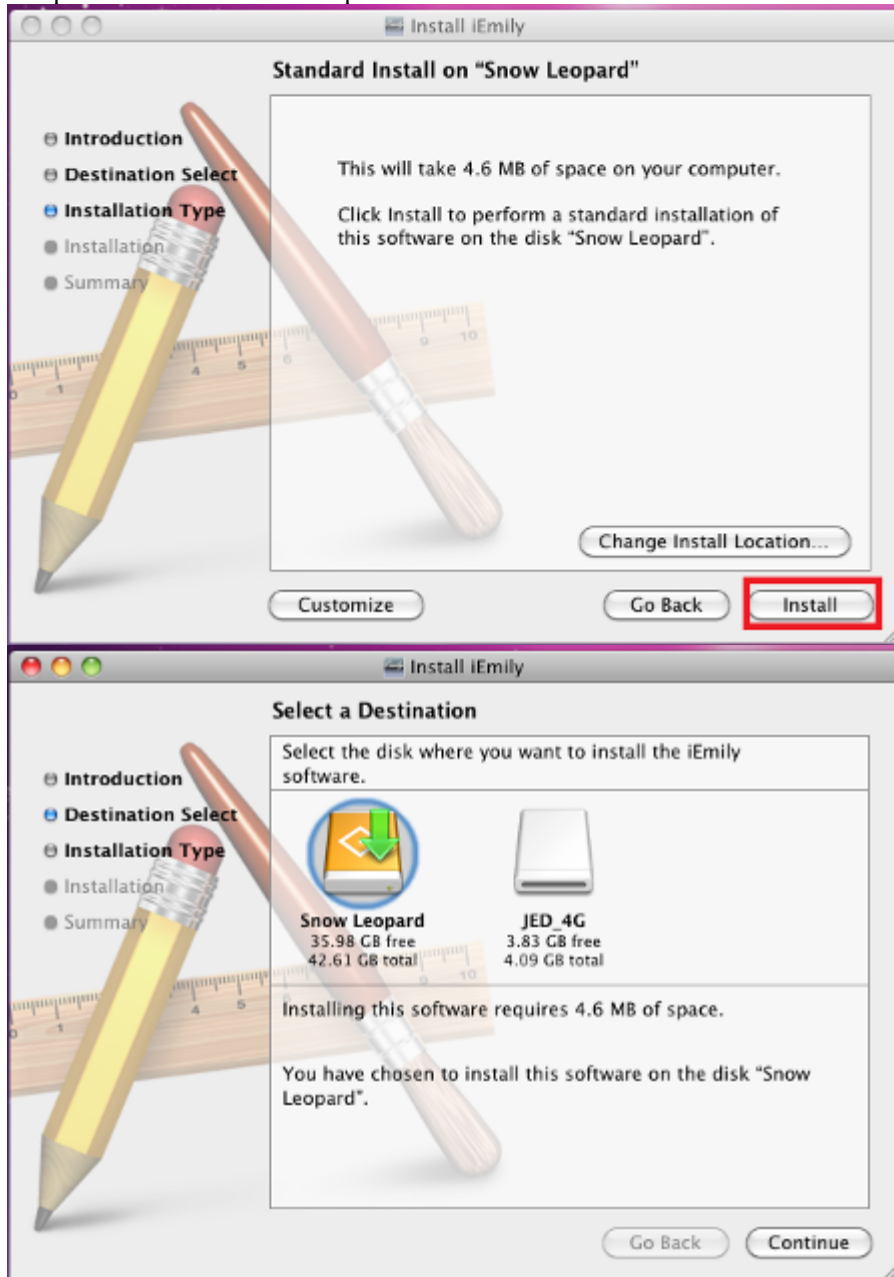
If the computer is running on Mac OS X v10.6 Snow Leopard, click 10.6 folder to select “iEmily.mpkg”.



1.2.3 Upon seeing the “Install iEmily” page as shown below, click [Continue] to proceed installation.



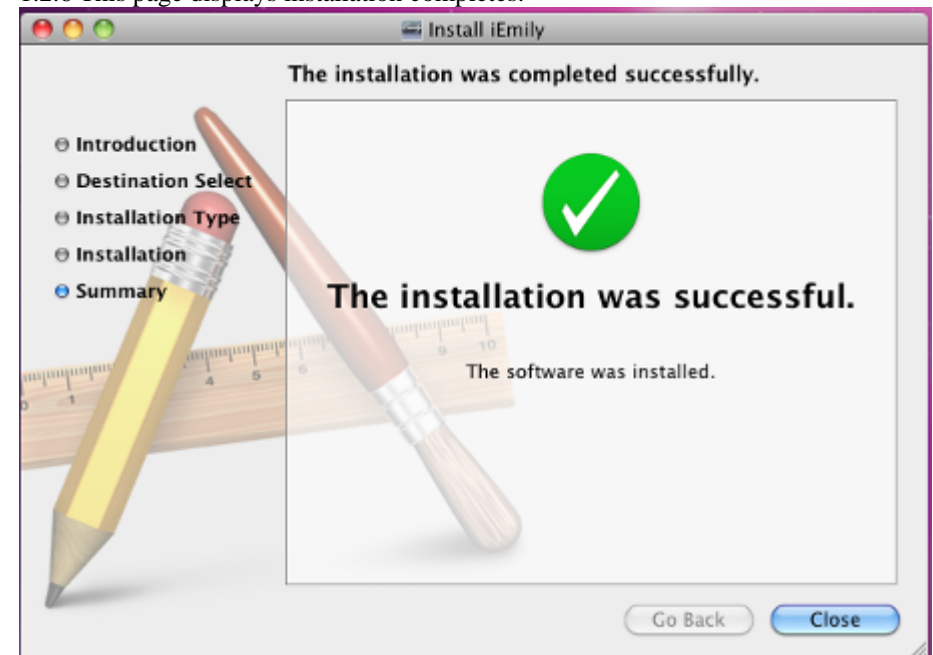
1.2.4 The “Select a Destination” setup page allows user to select the desired location to save the iEmily program. The “Setup” program will automatically select the computer harddrive “Snow Leopard” as the default location.



1.2.5 Enter User name and password. If there is no password given, leave it blank and click [OK].



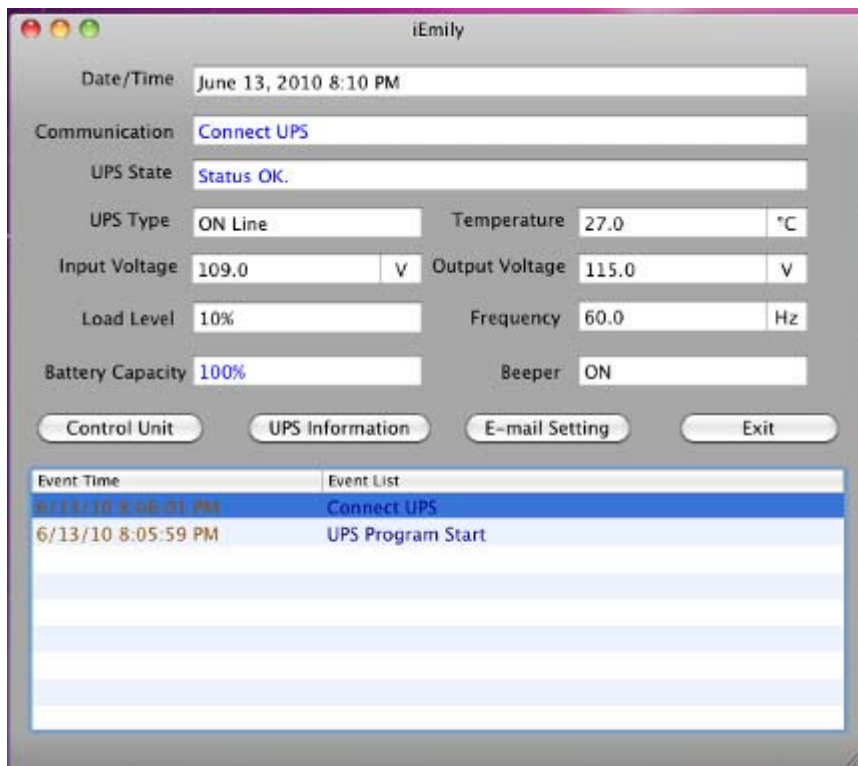
1.2.6 This page displays installation completes.



1.2.7 Open Applications Folder to run iEmily software.

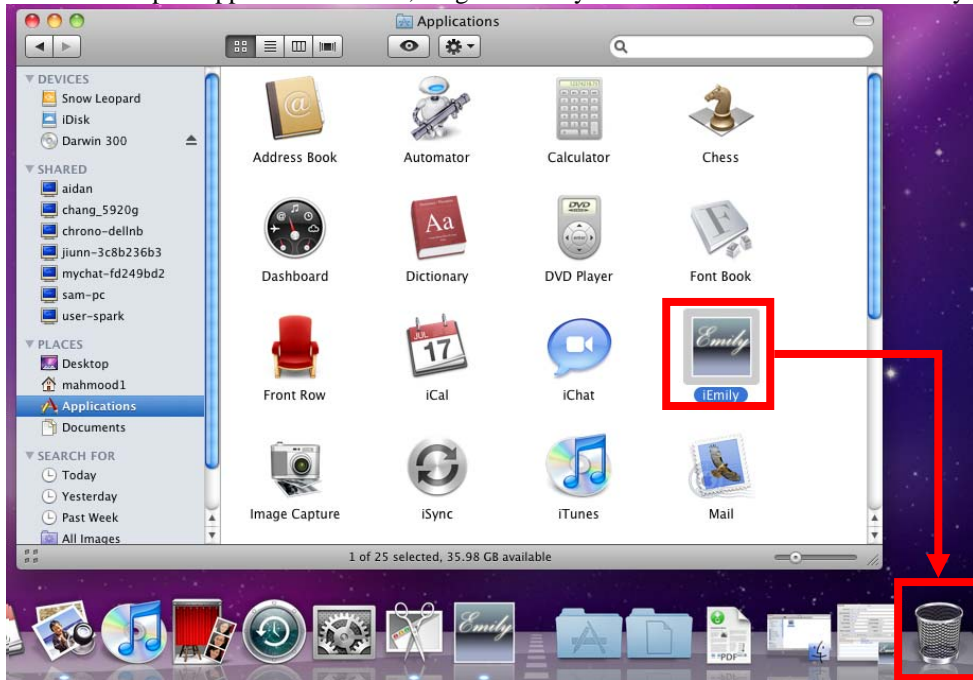


1.2.8 Right-click iEmily in Dock, go to Options, user can select to run iEmily automatically when computer login – “Open at Login” or turn on iEmily manually – “Keep in Dock”. Select one.



## 1.3 Uninstall iEmily

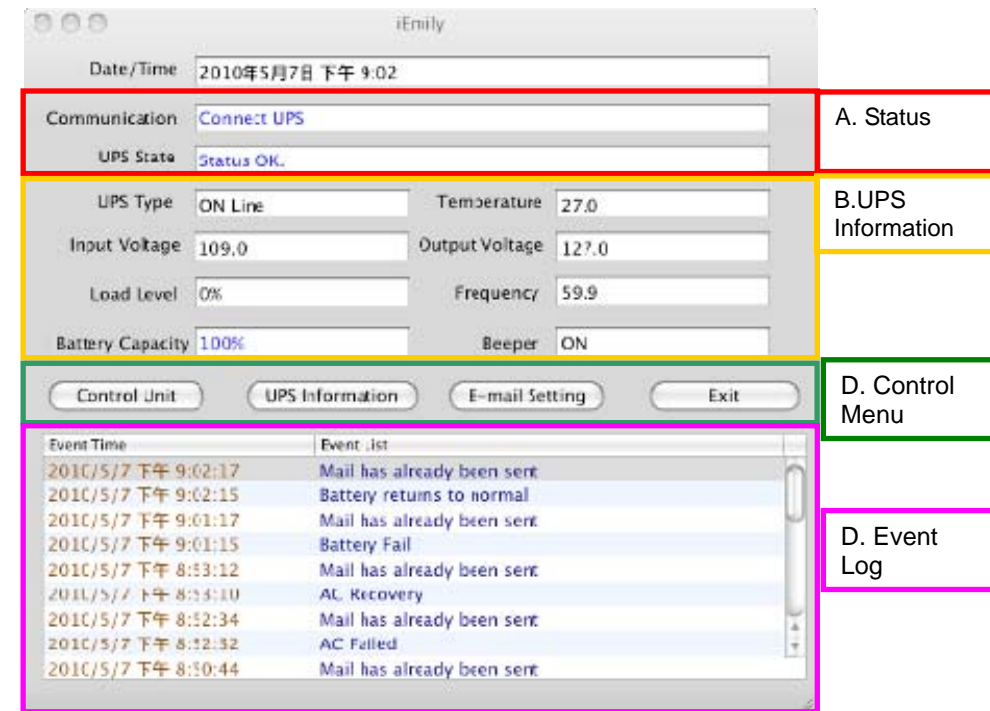
### 1.3.1 Open Applications Folder, drag the iEmily to the Trash bin to uninstall iEmily.



## 2. Function Descriptions

iEmily program is a user friendly UPS monitoring program which enables communication between UPS and computer via USB port. It provides easy to read real-time monitoring of important UPS parameters such as input/output voltage, frequency, UPS temperature, loads and battery capacity. The Event log display UPS status and record a list of history events. In event of Power outage or abnormality, the iEmily program is capable of automatically informing user via email instantly.

### 2.1 Real-Time Monitoring Display



## 2.2 Status and Settings

### A. Status:

Communication: Display UPS communication signal

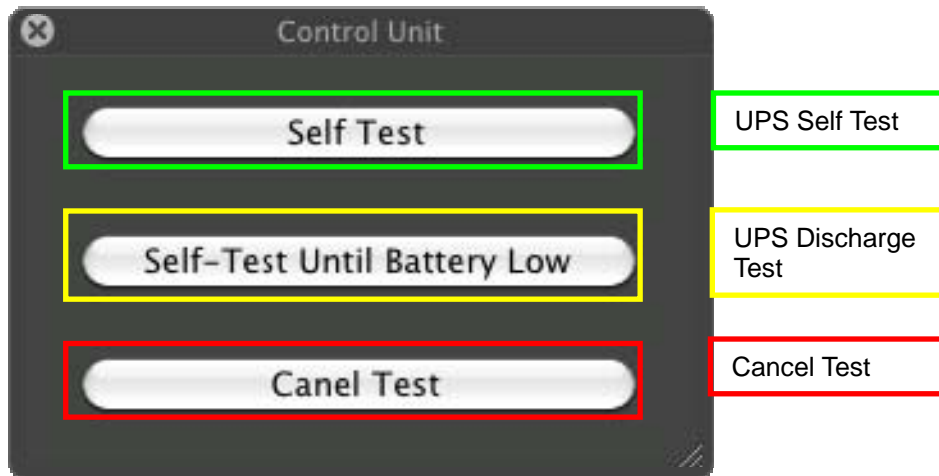
UPS State: Display UPS status

### B. UPS Information

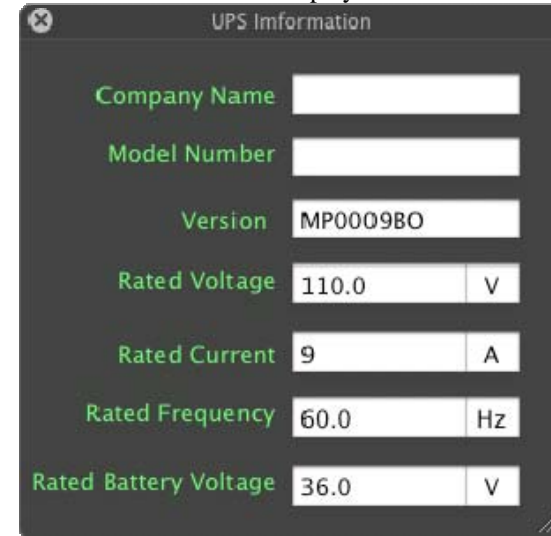
Displays input/output voltage, frequency, load capacity (display up to 120%), battery capacity (display up to 100%).

### C. Control Menu:

#### 1. Control Unit : UPS Control Panel

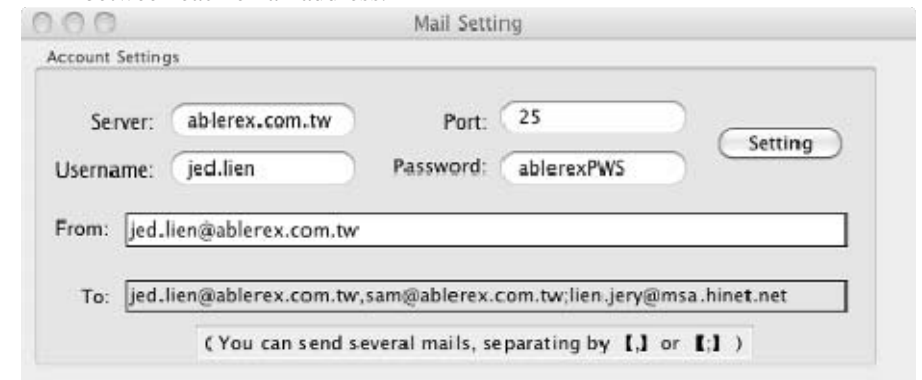


## 2. UPS Information Display



### 3. E-mail Setting : Below is the Mail Setting Dialog Box.

To send email alert to multiple recipients, insert a semi colon (;) or comma (,) between each email address.



4. Upon entering e-mail information, click on [Setting] to save e-mail information. A dialog box will appear to do a mail test.

Note; Internet Firewall may block this e-mail function. If you have installed firwall, please enable this function.



5. This page displays email sent successfully.

Event Time	Event List
2009/12/27 下午 3:47:26	Mail has already been sent
2009/12/27 下午 3:47:24	AC Failed
2009/12/27 下午 3:47:18	Connect UPS
2009/12/27 下午 3:47:16	UPS Program Start

6. This page display email delivery failure.

Event Time	Event List
2009/12/27 下午 3:49:12	Mail unable to send
2009/12/27 下午 3:49:11	AC Failed
2009/12/27 下午 3:48:56	Connect UPS
2009/12/27 下午 3:48:55	UPS Program Start

- D. Event Log: Display events and UPS status.

**iEmily**

Date/Time: June 13, 2010 8:56 PM

Communication: [Connect UPS](#)

UPS State: [Status OK.](#)

UPS Type: ON Line      Temperature: 29.0 °C

Input Voltage: 111.0 V      Output Voltage: 115.0 V

Load Level: 10%      Frequency: 60.0 Hz

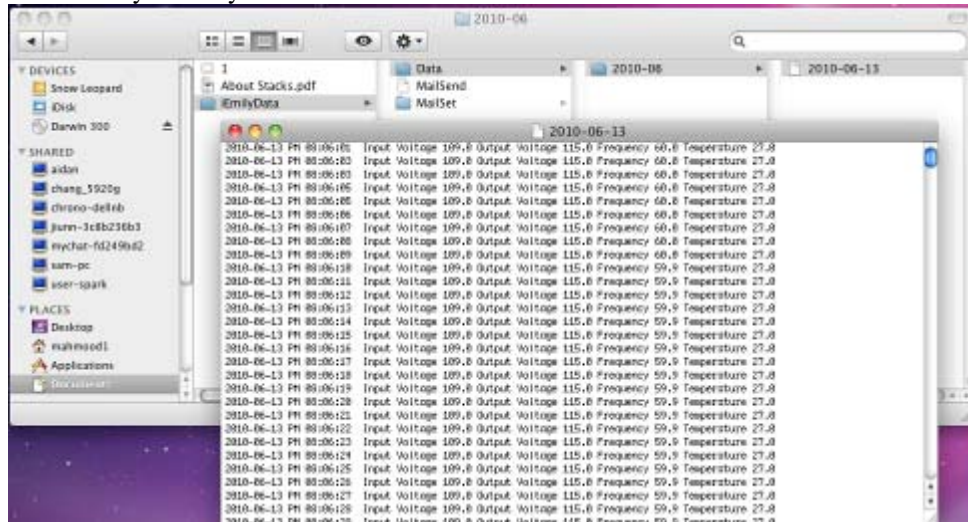
Battery Capacity: 79%      Beeper: ON

Control Unit    UPS Information    E-mail Setting    Exit

Event Time	Event List
6/13/10 8:56:40 PM	Mail unable to send
6/13/10 8:56:39 PM	AC Recovery
6/13/10 8:56:21 PM	Mail unable to send
6/13/10 8:56:20 PM	AC Failed
6/13/10 8:40:19 PM	Connect UPS
6/13/10 8:40:15 PM	Disconnect UPS
6/13/10 8:40:08 PM	Connect UPS
6/13/10 8:40:07 PM	UPS Program Start

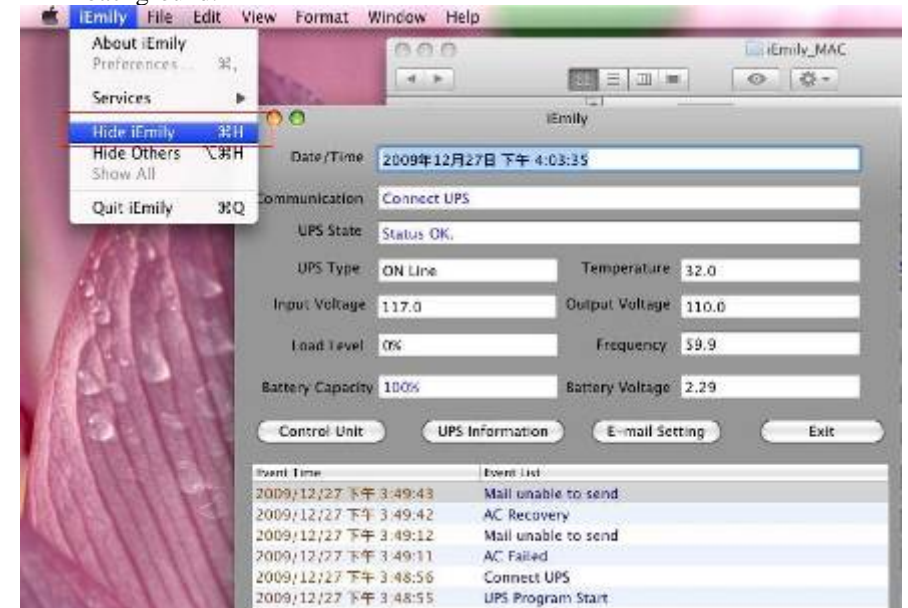
## 2.3 Data Log

Records UPS parameters per second (Input voltage, output voltage, frequency).  
Records are saved in: Documents/iEmilyData/Data/2010-06/. Saved records are sort by monthly folders.



## 2.4 Other Functions

- I. Hide iEmily: Click “iEmily” from the program toolbar, select [Hide iEmily]. Users can hide iEmily dialog box while iEmily program works in the background.

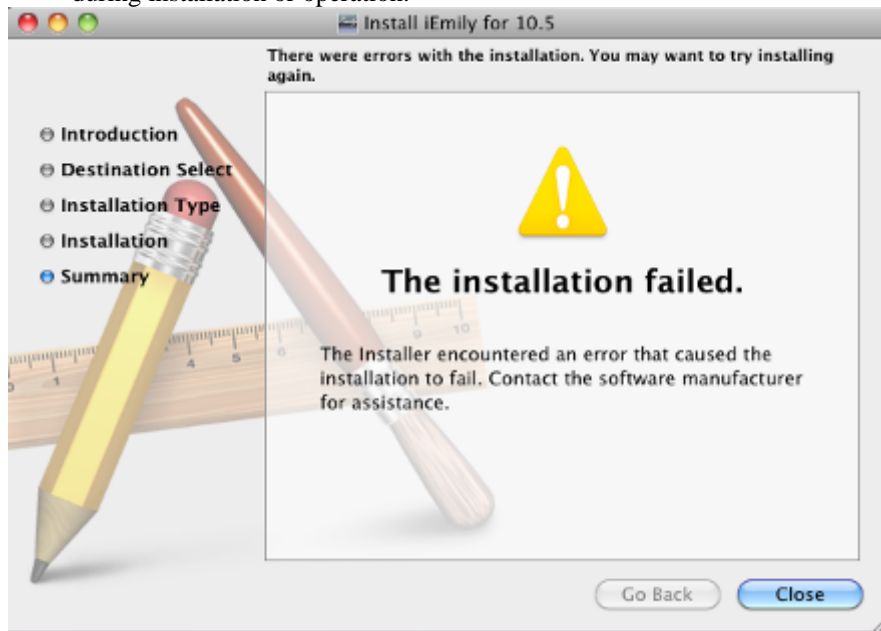


- II. iEmily Help : Click “Help” from the program toolbar to run iEmily Help



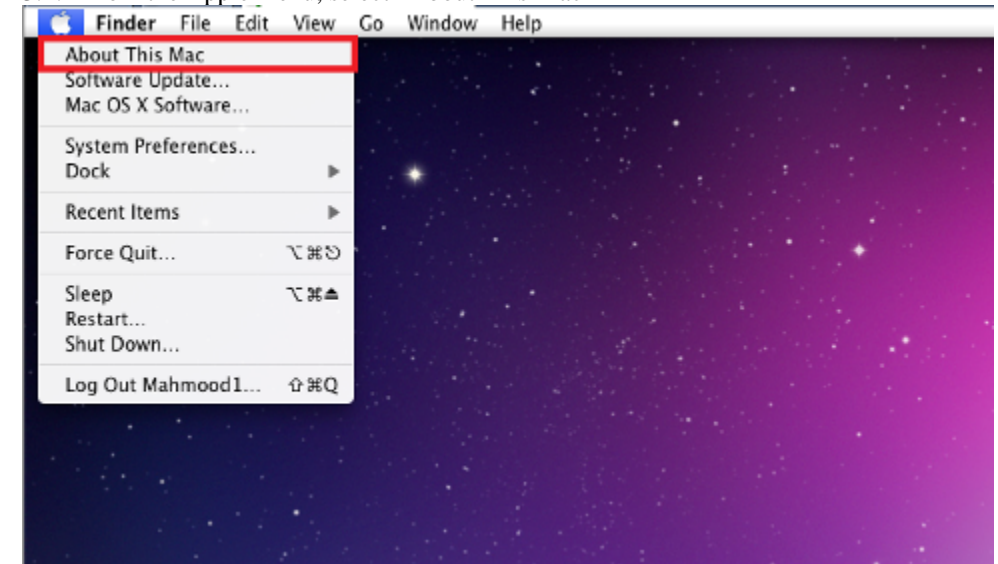
### 3. iEmily Troubleshooting Guide

- 3.1 iEmily program failure during installation or operation.  
iEmily program installation is unsuccessful if the following dialog box appears during installation or operation.



Solution: Mac OS not compatible with iEmily

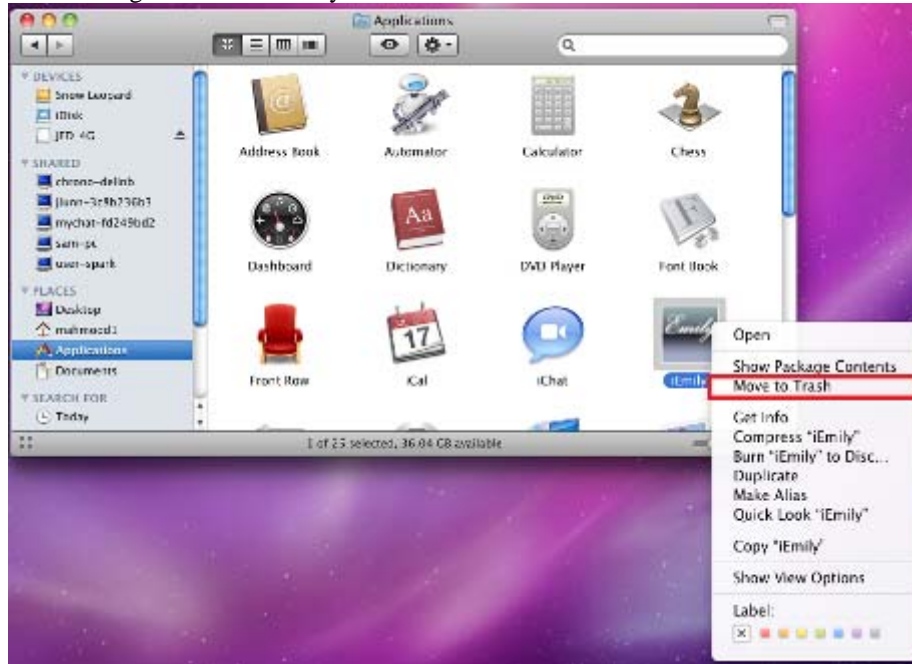
- 3.1.1 From the Apple menu, select "About This Mac"



The resulting window shows your operating system. In this example, you are using Mac OS X, version 10.6.2



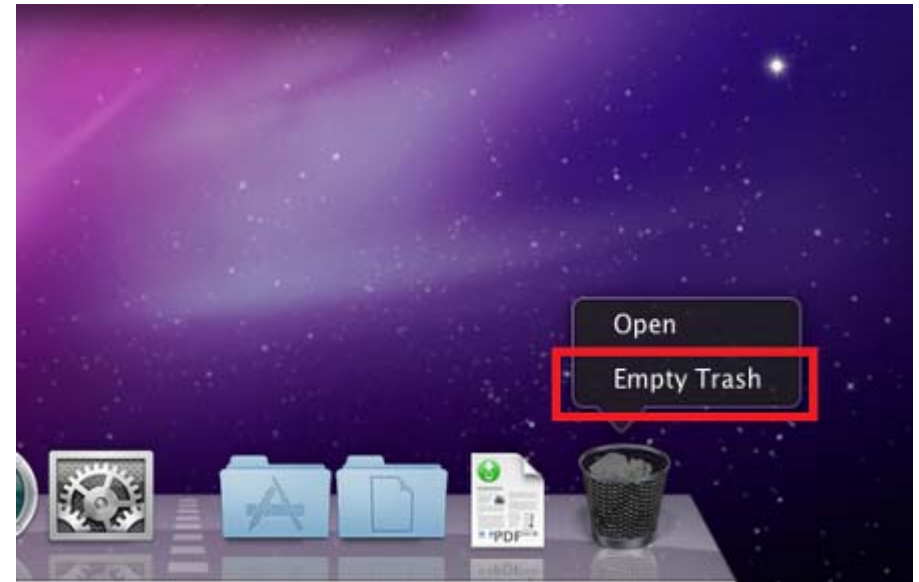
- 3.1.2 Delete the current iEmily program from the Applications folder.  
Right-click the iEmily and select “Move to Trash”.



- 3.1.3 Enter User name and password. If there is no password given, leave it blank and click [OK].



- 3.1.4 Click the Trash icon in the Dock. Select “Empty Trash” to delete all files in the trash.



- 3.1.5 Reinstall iEmily.mpkg.  
The computer is running on Mac OS X v10.6, click 10.6 folder to select “iEmily.mpkg”.

