

# MP-RT PLUS

## DSP-CONTROLLED ON-LINE RACK TOWER UPS

1000VA ~ 3000VA

The MP-RT Plus series is a sleek double conversion online rack-tower convertible UPS with premium features including a wide input voltage window and extended runtime capability for critical applications for IT equipment, routers, point of sales and servers.



### PERFECT FOR:



Routers



PC & Networks



Switches



IT loads & servers

## FEATURES

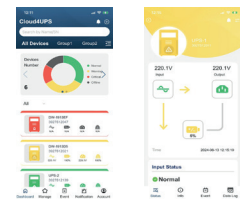


- Online double conversion VFI protection from 1000VA to 3000VA
- Extreme battery lifetime thanks to:
  - Wide input voltage tolerance (110-300V)
  - Wide input frequency (45-65Hz)
  - Intelligent battery management
- Optimized Output Power Factor 1.0
- Cold start to activate loads without mains
- Multiple operation modes to maximize energy efficiency
- Strong overload capability to improve Circuit Breaker's selectivity
- Intuitive LCD interface provides clear information with easy to use navigation keys
- UPS management via RS232 port or USB port
- Multiple outlets types: IEC, Schuko, Universal for various output connection
- Firmware upgradeable for updates and customization

## OPTIONS



- External Battery Connector for extended runtime capability
- External matching battery cabinet
- SNMP Card, Dry Contact Card, RS485 Card
- SNMP + WiFi Card supports real-time UPS management and monitoring via TCP/IP (RJ45), WiFi connection and Cloud4UPS mobile APP.



## WHAT'S IN THE BOX

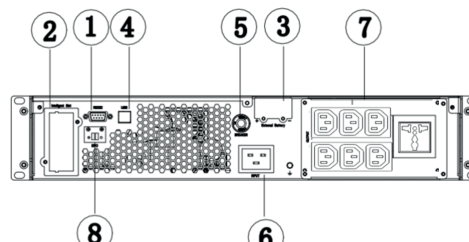
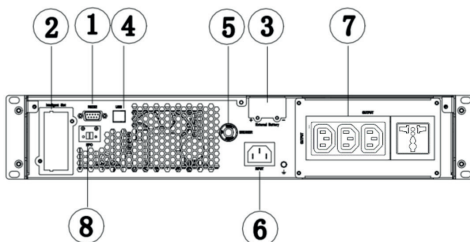


- Input power cable
- Output power cable (IEC C13 to IEC C14)
- Other Cables and Accessories are sold separately

## BACK PANEL

MP-RT Plus 1000

MP-RT Plus 2000/MP-RT Plus 3000



1. RS232
2. Smart Slot
3. External battery port
4. USB
5. Input over current protection breaker
6. AC input
7. Output socket
8. EPO

# SPECIFICATIONS

MODEL		MP-RT PLUS 1000	MP-RT PLUS 2000	MP-RT PLUS 3000	
INPUT	Input Voltage	220/230/240 Vac			
	Voltage Range*1	110~300 Vac			
	Phase	Single Phase with Ground			
	Frequency	50/60Hz			
	Frequency Range	45~65Hz (Auto sensing)			
	Input Power Factor	>0.99 @ 100% linear load			
OUTPUT	Capacity	1000VA/1000W	2000VA/2000W	3000VA/3000W	
	Output Voltage	200/208220/230/240 Vac (Settable)			
	Output Power Factor	1.0			
	Output Voltage Distortion	<3% @ 100% Linear load <7% @ 100% non-linear load			
	Output Voltage Regulation	±1%			
	Frequency	50/60Hz			
	Frequency Range	±3Hz or ±1Hz (selectable)			
	Crest Factor	3:1 (acceptable)			
	Transfer Time (AC to DC)	0ms			
	Output Waveform	Pure Sine Wave			
EFFICIENCY	Line Mode	Up to 92%			
	High Efficiency Mode	Up to 96.5%			
BATTERY <sup>2</sup>	Type	Sealed Lead Acid Maintenance Free			
	Capacity	Standard 12V/7AH or 12V/9AH (Optional upon request)			
	Number of Battery	3	6	6	
	Rated Battery Voltage	36Vdc	72Vdc	72Vdc	
	Uptime with internal battery at 100% load*3	≥ 5min			
	Recharge Time (to 90%)	4~6 hours			
	External Battery Connection	Yes			
	Battery Bank	Code	UBR0636	UBR1272	UBR1272
		Max. Battery quantities	2 strings x 3 blocks	2 strings x 6 blocks	2 strings x 6 blocks
		Dimension (WxHxD, mm)	440 x 88 x 446	440 x 88 x 597	440 x 88 x 597
Weight (kg)		25.0	41.0	41.0	
FUNCTION	Multi-Mode	Normal/ECO/CVCF			
	DC Start	Yes			
PHYSICAL	Dimension (WxHxD, mm)	440 x 88 x 369	440 x 88 x 564	440 x 88 x 564	
	Net Weight (kg)	13.0	22.5	25.4	
	Output Connections*4	3x IEC-C13 + 1x Universal	6x IEC-C13 + 1x Universal	6x IEC-C13 + 1x Universal	
COMMUNICATION	Standard	RS-232, USB, EPO, Interface Card Slots			
	Option	SNMP card / SNMP + WiFi card / Dry Contact card / RS485 card			
ENVIRONMENT	Operation Temperature	0~40°C			
	Operation Humidity	0%~90% (without condensing)			
	Altitude	1000m without derating			
	Noise Level	≤ 50dBA @ 1 meter front			
STANDARDS AND CERTIFICATIONS	Safety, EMC, Performance	IEC/EN 62040-1, IEC/EN 62040-2, IEC/EN 62040-3			
	Marks	CE, FCC			

\*Specifications subject to change without notice

\*1) Based on load percentage.

\*2) Ambient temperature for battery ≤ 25°C

\*3) Battery capacity and configuration depends on the required uptime and load type.

\*4) Other outlet types are available upon request.

Designed &  
Engineered by:

